

SMEC

PRODUCT LINE UP

www.smecmachinetools.com

Making a Smarter World

A company with a dream and a future,
an innovative technology company based on research
SMEC is leading the way to creating a cutting-edge future.



LM Guide Type Turning Center



5-8inch High Efficiency Gang Type Turning Center

(): Option

Model	Chuck	Spindle Speed (RPM)	Spindle Motor (Cont./Max) (KW)	Max. Turning Dia. (mm)	Max. Turning Length (mm)	Draw Tube ID (mm)	Swing over Bed (mm)	Travels		Rapid Travels Rate (X/Z)	Number of Tool
								X-Axis	Z-Axis		
PL1600G	6"	6,000	11/15	170	A: 300 B: 270	52	540	450	300	30/36	3(6)



6-8inch Compact Turning Center

(): Option []: Mill Type

Model	Chuck	Spindle Speed (RPM)	Spindle Motor (Cont./Max) (KW)	Max. Turning Dia. (mm)	Max. Turning Length (mm)	Draw Tube ID (mm)	Swing over Bed (mm)	Travels		Rapid Travels Rate (X/Z)	Number of Tool
								X-Axis	Z-Axis		
NS 2000[M]	A: 6" B: 8"	A: 6,000 B: 4,500	11/18.5	310 [318]	A: 304 [286] B: 261 [243]	A: 52 B: 68	565	175	350	36/36	10[12] [BMT45]
NS 2000L[M]					A: 534 [516] B: 491 [473]						



6-8inch High Efficiency Y Axis Sub-Spindle Turning Center

(): Option []: Mill Type

Model	Chuck	Spindle Speed (RPM)	Spindle Motor (Cont./Max) (KW)	Max. Turning Dia. (mm)	Max. Turning Length (mm)	Draw Tube ID (mm)	Swing over Bed (mm)	Travels			Rapid Travels Rate (X/Y/Z)	Number of Tool
								X-Axis	Y-Axis	Z-Axis		
NS 2100Y	A: 6" B: 8"	A: 6,000 B: 4,500	11/18.5	378	A: 521.3 B: 489	A: 52 B: 68	820	205	110 (±55)	590	30/10/36	12(24) [BMT45]
NS 2100SY	A: 6/5" B: 8/5"											
NS 2600Y	10"	3,500	15/18.5	430	624	82	860	250	705	30/10/30	12(24) [BMT55]	
NS 2600SY	10/6"	3,500/6,000										

※ Chuck : Main Chuck/Sub Chuck

Box Guide Type Turning Center



6-12inch High Performance Turning Center

(): Option []: Mill Type

Model	Chuck	Spindle Speed (RPM)	Spindle Motor (Cont./Max) (KW)	Max. Turning Dia. (mm)	Max. Turning Length (mm)	Draw Tube ID (mm)	Swing over Bed (mm)	Travels		Rapid Travels Rate (X/Z)	Number of Tool
								X-Axis	Z-Axis		
SL 2000[M]	A: 6" B: 8"	A: 6,000 B: 4,500	15/18.5	360	540[520]	A: 52 B: 68	570	210 [215]	560	24/30	12(24) [BMT55]
SL 2500[M]	A: 8" B: 10"				A: 4,500 B: 3,500						
SL 2500X[M]		A: 850[784] B: 834[767]	880 [820]								
SL 2500L[M]	A: 1,070[1,004] B: 1,054[997]		1,100 [1,040]								
SL 3000[M]		A: 554[497] B: 528[456]	600 [540]								
SL 3000X[M]	A: 834[767] B: 808[736]		880 [820]								
SL 3000L[M]		A: 1,054[997] B: 1,028[956]	1,100 [1,040]								

Box Guide Type Turning Center



12~15inch High Performance Turning Center

() : Option [] : Mill Type

Model	Chuck	Spindle Speed (RPM)	Spindle Motor (Cont./Max) (KW)	Max. Turning Dia. (mm)	Max. Turning Length (mm)	Draw Tube ID (mm)	Swing over Bed (mm)	Travels		Rapid Travels Rate (X/Z)	Number of Tool
								X-Axis	Z-Axis		
SL 3500[M]	A: 12" B: 15"	A: 2,500 B: 2,000	18.5/26	500	780 [750]	A: 103 B: 117.5	680	280	855 [825]	20/24	12 [BMT65]
SL 3500L[M]					1,530 [1,500]				1,605 [1,575]		
SL 4000X[M]				A: 2,128[2,084] B: 2,087[2,042]	2,170		16/20				
SL 4000L[M]				A: 3,128[3,084] B: 3,087[3,042]				3,170			



15~24inch High Performance Turning Center

() : Option [] : Mill Type

Model	Chuck	Spindle Speed (RPM)	Spindle Motor (Cont./Max) (KW)	Max. Turning Dia. (mm)	Max. Turning Length (mm)	Draw Tube ID (mm)	Swing over Bed (mm)	Travels		Rapid Travels Rate (X/Z)	Number of Tool
								X-Axis	Z-Axis		
SL 4500[M]	A: 18" (15") B: 21" C: 24"	A: 1,800 (2,000) B: 1,500 C: 1,200	30/37	690[620]	1,250 [1,213]	A: 117.5 B: 140.0 C: 166.5	775	350	1,325	-	12 [BMT75]
SL 4500X[M]					2,255				2,330	-	
SL 4500L[M]					3,055				3,130	-	
SL 4500XL[M]				A: 690 B/C: 620	5,000				5,100	-	



21~32inch High Performance Turning Center

() : Option [] : Mill Type

Model	Chuck	Spindle Speed (RPM)	Spindle Motor (Cont./Max) (KW)	Max. Turning Dia. (mm)	Max. Turning Length (mm)	Draw Tube ID (mm)	Swing over Bed (mm)	Travels		Rapid Travels Rate (X/Z)	Number of Tool
								X-Axis	Z-Axis		
SL 5500[M]	A: 21" (24") C: 32"	A: 1,500 (1,200) C: 1,000	A: 30/45 C: 37/55	690	A: 1,097[1,079] C: 1070[1052]	A: 166.5 C: 232	900	370	1,130	20/20	12 [BMT75]



21~24inch High Performance Turning Center

() : Option [] : Mill Type

Model	Chuck	Spindle Speed (RPM)	Spindle Motor (Cont./Max) (KW)	Max. Turning Dia. (mm)	Max. Turning Length (mm)	Draw Tube ID (mm)	Swing over Bed (mm)	Travels		Rapid Travels Rate (X/Z)	Number of Tool
								X-Axis	Z-Axis		
SL 6500[M]	A: 21" B: 24"	A: 1,500 B: 1,200	37/55	900	1,000	140	1,030	470	1,050	12/18	12 [BMT85]
SL 6500X[M]					2,000				2,050	12/15	
SL 6500L[M]					3,200				3,270	12/10	
SL 6500XL[M]					5,050						

Box Guide Type Turning Center



32inch High Performance Turning Center

(): Option [] : Mill Type

Model	Chuck	Spindle Speed (RPM)	Spindle Motor (Cont./Max) (KW)	Max. Turning Dia. (mm)	Max. Turning Length (mm)	Draw Tube ID (mm)	Swing over Bed (mm)	Travels			Rapid Travels Rate (X/Z)	Number of Tool
								X-Axis	Z-Axis			
SL 8500[M]	32"	500	37/55	900	1,000	232	1,030	470		1,050	12/18	12 [BMT85]
SL 8500X[M]					2,000					2,050		
SL 8500L[M]					3,200					3,270	12/10	
SL 8500XL[M]					5,050					5,100		



6~8inch Y Axis Sub-Spindle Turning Center

(): Option [] : Mill Type

Model	Chuck	Spindle Speed (RPM)	Spindle Motor (Cont./Max) (KW)	Max. Turning Dia. (mm)	Max. Turning Length (mm)	Draw Tube ID (mm)	Swing over Bed (mm)	Travels			Rapid Travels Rate (X/Y/Z)	Number of Tool
								X-Axis	Y-Axis	Z-Axis		
SL 2000Y	A : 6" B : 8"	A : 6,000 B : 4,500	11/18.5	395	A : 490 B : 450	A : 52 B : 68	650	235	105 (±525)	580	24/10/30	12 [BMT55]
SL 2000SY	A : 6/6" B : 8/6"	A : 6,000/6,000 B : 4,500/6,000										

※ Chuck : Main Chuck/Sub Chuck



8~10inch Y Axis Sub-Spindle Turning Center

(): Option [] : Mill Type

Model	Chuck	Spindle Speed (RPM)	Spindle Motor (Cont./Max) (KW)	Max. Turning Dia. (mm)	Max. Turning Length (mm)	Draw Tube ID (mm)	Swing over Bed (mm)	Travels			Rapid Travels Rate (X/Y/Z)	Number of Tool
								X-Axis	Y-Axis	Z-Axis		
SL 2500Y	A : 8" B : 10"	A : 4,500 B : 3,500	A : 11/18.5 B : 18.5/26	360	A : 490 B : 476	A : 68 B : 77	650	235	100 (±50)	580	18/10/24	12 [BMT65]
SL 2500LY					A : 1,280 B : 1,265					1,375		
SL 2500SY	A : 8/6" B : 10/6"	A : 4,500/6,000 B : 3,500/6,000	A : 490 B : 476	580	18/10/24							
SL 2500LSY				A : 1,280 B : 1,265		1,375	30/10/30					

※ Chuck : Main Chuck/Sub Chuck

Box Guide Type Turning Center



12~15inch Y Axis Turning Center

(): Option [] : Mill Type

Model	Chuck	Spindle Speed (RPM)	Spindle Motor (Cont./Max) (KW)	Max. Turning Dia. (mm)	Max. Turning Length (mm)	Draw Tube ID (mm)	Swing over Bed (mm)	Travels			Rapid Travels Rate (X/Y/Z)	Number of Tool
								X-Axis	Y-Axis	Z-Axis		
SL 3500Y	A: 12" B: 15"	A: 2,500 B: 2,000	18.5/26	430	A: 795 B: 765	A: 103 B: 117.5	850	280	130 (±65)	865	30/10/30	12(24) [BMT65]
SL 3500LY					A: 2,125 B: 2,095							



15~18inch Y Axis Turning Center

(): Option [] : Mill Type

Model	Chuck	Spindle Speed (RPM)	Spindle Motor (Cont./Max) (KW)	Max. Turning Dia. (mm)	Max. Turning Length (mm)	Draw Tube ID (mm)	Swing over Bed (mm)	Travels			Rapid Travels Rate (X/Y/Z)	Number of Tool
								X-Axis	Y-Axis	Z-Axis		
SL 4500XY	A: 18" (15") B: 21" C: 24"	A: 1,800 (2,000) B: 1,500 C: 1,200	30/45	620	A: 2,140 B/C: 2,117	A: 1175 B: 140 C: 166.5	975	350	200 (±100)	2,270	20/15/18	12 [BMT75]
SL 4500LY					2,930					3,060		
SL 4500XY					5,000					5,090		

Vertical Turning Center



12~32inch High Performance Vertical Turning Center

(): Option [] : Mill Type

Model	Chuck	Spindle Speed (RPM)	Spindle Motor (Cont./Max) (KW)	Max. Turning Dia. (mm)	Max. Turning Length (mm)	Draw Tube ID (mm)	Swing over Bed (mm)	Travels		Rapid Travels Rate (X/Z)	Number of Tool
								X-Axis	Z-Axis		
SLV 500	12"(15")	2,000	18.5/26	500	495	-	700	317	495	20/20	12 [BMT65]
SLV 800[M]	18" (15", 21", 24")	2,000 (2,000, 1800, 1500)	22/30	830	800	-	890	440	800		12 [BMT75]
SLV 1000[M]	24"(32")	1,800 (800)	37/55	1,000	955	-	1,100	540	955		12 [BMT85]

Multi-Axis Turning Center



High Efficiency Multi Axis Turning Center

(): Option [] : Mill Type

Model	Chuck	Spindle Speed (RPM)	Spindle Motor (Cont./Max) (KW)	Max. Turning Dia. (mm)	Max. Turning Length (mm)	Draw Tube ID (mm)	Swing over Bed (mm)	Travels			Rapid Travels Rate (X/Y/Z)	Number of Tool
								X-Axis	Y-Axis	Z-Axis		
NS 1600T2Y2	6"	6,000	11/22	ø230	830	51	230	170	90	530	24/15/30	12(24) [BMT55]

Special Purpose Machine



Turning Center for Diff. Case

() : Option

Model	Chuck	Spindle Speed (RPM)	Spindle Motor (Cont./Max) (KW)	Max. Turning Dia. (mm)	Max. Turning Length (mm)	Draw Tube ID (mm)	Swing over Bed (mm)	Travels		Rapid Travels Rate (X/Z)	Number of Tool
								X-Axis	Z-Axis		
PL 25DC	-	2,500	15/18.5	86	-	-	520	-	290	-/24	-



Turning Center for Quartz

() : Option

Model	Chuck	Spindle Speed (RPM)	Spindle Motor (Cont./Max) (KW)	Max. Turning Dia. (mm)	Max. Turning Length (mm)	Draw Tube ID (mm)	Swing over Bed (mm)	Travels		Rapid Travels Rate (X/Z)	Number of Tool
								X-Axis	Z-Axis		
PL 800GB	-	2,200	11/15	650	150	-	800	400	400	24/30	(6)
SL 1000GB	-	1,000	7.5/11	820	340	-	1,000	510	500	16/16	(6)



4 Axis Machining Center for Quartz

() : Option

Model	Travels (X/Y/Z) (mm)	Spindle Speed (RPM)	Spindle Motor (Cont./Max) (KW)	Table Size (mm)	Max. Workpiece Weight (kg)	Spindle to Table Surface (mm)	Rapid Travels Rate (X/Y/Z)	Tool Shank	Max. Tool Length / Weight (mm/kg)	Tool Storage Capacity
MAAC 480S	560/480/460	12,000	11/18.5	350	200	220 - 680	24/24/24	BT40	300/7	30
MVQ 5000	650/520/475	15,000	11/15	650	500	150 - 625	40/40/40	BT40	300/8	30

5 Axis Machining Center



5 Axis Machining Center

() : Option

Model	Travels (X/Y/Z) (mm)	Spindle Speed (RPM)	Spindle Motor (Cont./Max) (KW)	Table Size (mm)	Max. Workpiece Weight (kg)	Spindle to Table Surface (mm)	Rapid Travels Rate (X/Y/Z)	Tool Shank	Max. Tool Length / Weight (mm/kg)	Tool Storage Capacity
MVF 5000	650/520/475	12,000	11/18.5	650	500	150 - 625	40/40/40	BT40	300/8	30(60)

Tapping Center

High Speed Tapping Center

(): Option



Model	Travels (X/Y/Z) (mm)	Spindle Speed (RPM)	Spindle Motor (Cont./Max) (KW)	Table Size (mm)	Max. Workpiece Weight (kg)	Spindle to Table Surface (mm)	Rapid Travels Rate (X/Y/Z)	Tool Shank	Max. Tool Length / Weight (mm/kg)	Tool Storage Capacity
SM 400DH	530/400/415	12,000 (24,000)	5.5/7.5	750 x 400	300	180 ~ 595	60/60/48	BT30	190/3	2 - 20
Q 4200	530/420/350		2.2/3.7	580 x 420	250	150 ~ 500	48/48/48		150/3	21(28)
Q 4200L	700/420/350			750 x 420						

LM Guide Type Machining Center

High Efficiency Machining Center

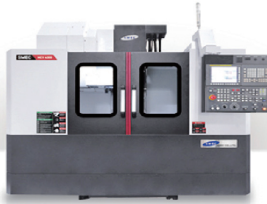
(): Option



Model	Travels (X/Y/Z) (mm)	Spindle Speed (RPM)	Spindle Motor (Cont./Max) (KW)	Table Size (mm)	Max. Workpiece Weight (kg)	Spindle to Table Surface (mm)	Rapid Travels Rate (X/Y/Z)	Tool Shank	Max. Tool Length / Weight (mm/kg)	Tool Storage Capacity
PCV 430	700/430/510	10,000 (15,000)	11/18.5	750 x 420	560	130 ~ 640	48/48/36	BT40	300/8	24
PCV 460	700/460/510	15,000 (10,000)				330 ~ 840				

High Performance Machining Center

(): Option



Model	Travels (X/Y/Z) (mm)	Spindle Speed (RPM)	Spindle Motor (Cont./Max) (KW)	Table Size (mm)	Max. Workpiece Weight (kg)	Spindle to Table Surface (mm)	Rapid Travels Rate (X/Y/Z)	Tool Shank	Max. Tool Length / Weight (mm/kg)	Tool Storage Capacity
MCV 4500D	560/450/475	12,000	11/18.5	2 - 720 x 610	2 - 250	210 ~ 685	36/36/36	BT40	300/8	30
MCV 4600	900/460/520			1050 x 460	600	150 ~ 670	36/36/30			
MCV 5500	1,050/550/520			1,200 x 540	800	130 ~ 650				
MCV 5700	1,050/570/520			1,300 x 570	1,000	150 ~ 670	30/36/30			
MCV 5700L	1,600/570/520			1,700 x 570	1,000	150 ~ 670				
MCV 6700	1,350/670/650			1,550 x 670	1,300	150 ~ 800	36/36/30			
MCV 6700L	2,100/670/650			2,200 x 670	1,300	150 ~ 800	30/30/30			
MCV 8500L	2,540/850/650			2,600 x 850	2,000	150 ~ 800	30/30/24			

Box Guide Type Machining Center

High Performance Machining Center

() : Option



Model	Travels (X/Y/Z) (mm)	Spindle Speed (RPM)	Spindle Motor (Cont./Max) (KW)	Table Size (mm)	Max. Workpiece Weight (kg)	Spindle to Table Surface (mm)	Rapid Travels Rate (X/Y/Z)	Tool Shank	Max. Tool Length / Weight (mm/kg)	Tool Storage Capacity
LCV 550	1,150/550/520	8,000 Gear 8,000 Direct	11/18.5	1,200 x 550	800	150 ~ 670	24/24/20	BT50	300/8 300/15	30 24(30)
		12,000 Direct						BT40	300/7	30
LCV 6700	1,350/670/650	8,000 Gear	15/25	1,550 x 670	1,000	200 ~ 850	30/30/24	BT50	300/15	30
		8,000 Direct	11/18.5						BT40	
		12,000 Direct								
LCV 850	2,000/850/800	6,000	15/25	2,050 x 850	3,000	200 ~ 1,000	20/20/16	BT50	300/15	30 (40)
LCV 1060	2,500/1,060/900			2,800 x 1,060	5,000	200 ~ 1,100	16/16/16		350/15	

Hybrid Type Machining Center

Hybrid Type Machining Center

() : Option



Model	Travels (X/Y/Z) (mm)	Spindle Speed (RPM)	Spindle Motor (Cont./Max) (KW)	Table Size (mm)	Max. Workpiece Weight (kg)	Spindle to Table Surface (mm)	Rapid Travels Rate (X/Y/Z)	Tool Shank	Max. Tool Length / Weight (mm/kg)	Tool Storage Capacity
HYST 5700	1,050/570/520	12,000	11/18.5	1,300 x 570	1,000	150 ~ 670	36/36/30	BT40	300/8	30
HYST 5700L	1,600/570/520			1,700 x 570			30/36/30			
HYST 6700	1,350/670/650	8,000 Gear 8,000 Direct	11/18.5	1,550 x 670	1,300	200 ~ 850	36/36/30	BT50	300/15	
		12,000 Direct						BT40	300/8	

Long Bed Type Machining Center

Multi Purpose Long Bed Type Machining Center

() : Option

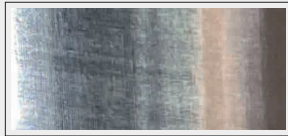
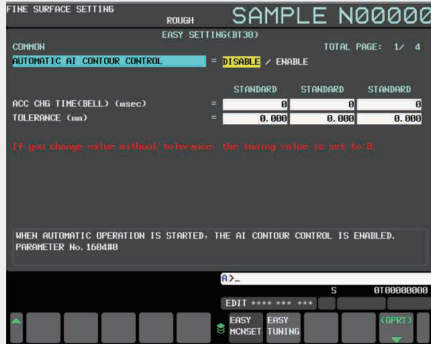


Model	Travels (X/Y/Z) (mm)	Spindle Speed (RPM)	Spindle Motor (Cont./Max) (KW)	Table Size (mm)	Max. Workpiece Weight (kg)	Spindle to Table Surface (mm)	Rapid Travels Rate (X/Y/Z)	Tool Shank	Max. Tool Length / Weight (mm/kg)	Tool Storage Capacity
MCV 400XL	3,000/400/350	12,000	5.5/11	3,200 x 420	Fixed Table	150 ~ 500	24/48/48	BT30	250/4	24
MCV 420UL	6,200/420/450	10,000	7.5/15	6,600 x 460		200 ~ 650	24/30/30		BT40	
MCV 510XL	4,000/510/550	12,000	11/18.5	4,600 x 550		150 ~ 700				
MCV 610XL	4,500/610/550	12,000	11/18.5	5,000 x 610			10,000			

Machining Solution (STD for Machining Center)

S4(SMEC SMOOTH SURFACE SYSTEM) Package

High performance NC options to improve machining performance provided as standard



Without S4 Package



With S4 Package

15 inch LCD monitor standard	
AICC II (AI Contour Control II)	Efficient accel/deceleration (200 block look ahead)
Jerk control	Speed control during acceleration changes
Smooth tolerance plus control	Stable curved shape forming
Machining conditions selection function	Adjust accuracy level according to machining conditions
Machining quality selection function	Visual machining check and setup guide
Manual Guide i	Transfer large program files
Data server	2MB (5,120M)
Part program storage	1,000ea

IoT Solution (OPT)



NC-Gate
Basic Platform



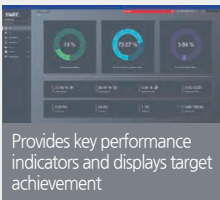
IoT-Gate
Expansion Platform

NC-Gate / IoT-Gate

The NC-Gate / IoT-Gate that was developed in-house with our ICT technology is a universal gateway that not only interworks with our machine tools, but machine tools from other manufacturers, robots, automation equipment, and analog / digital sensors as a network device capable of bi-directional communication.

Supported drivers : Fanuc / Mitsubishi / Siemens NC, Modbus TCP, DeviceNet, Profibus, Ethernet, AI/DI/DO

KPI (Key Performance Indexes)



Provides key performance indicators and displays target achievement

- Indicators : achievement rate, productivity, process defect rate, equipment and factory usage, quality defect rate, lead time, and average cycle time

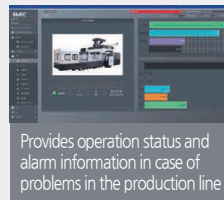
OEE (Overall Equipment Effectiveness)



Provides figures and graphs of overall equipment effectiveness

- Availability, performance, quality, etc. usage, quality defect rate, lead time, and average cycle time

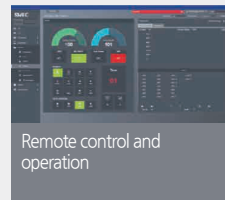
Realtime Monitoring



Provides operation status and alarm information in case of problems in the production line

- Provides information about the operation status, speed, production alarms, etc. of each machine

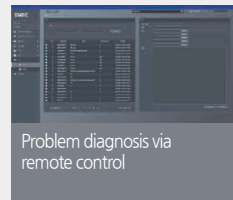
Remote Control/Management



Remote control and operation

- Emergency stop switch, program editing, etc.

Remote A/S



Problem diagnosis via remote control

- Provide remote diagnosis services to users via the IoT solution usage, quality defect rate, lead time, and average cycle time

SMEC User Interface



SMEC FANUC i PLUS Series

Machining Center

- 10.4"/15" LCD color display
- Portable M.P.G

Turning Center

- 10.4"/15" LCD color display
- Manual Guide i

Common Features

- Part program size 2MB
- High quality designed OP Panel
- SMEC Custom S/W

SMEC Custom S/W displayed using MDI's button or OP Panel's button

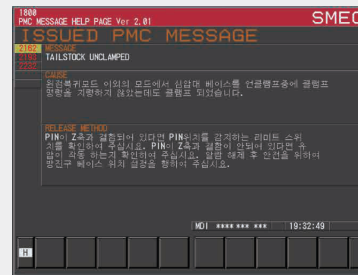


◀ **CUSTOM** : Provide operator convenience and improve productivity using the support function for tool management and additional device setting

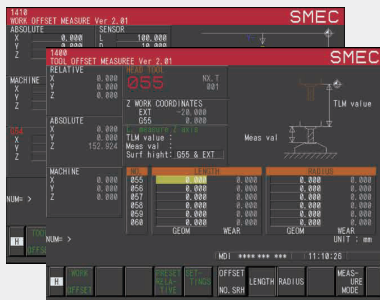
SMEC HMI



M/G-Code check function



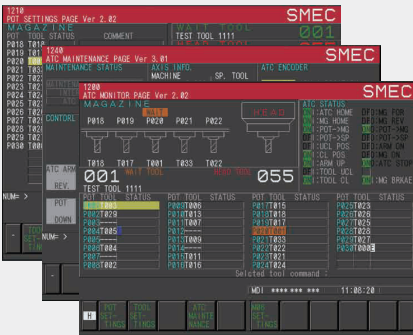
PMC alarm check function



Work coordinates, tool setting support function



Counter for each T-Code



ATC Magazine status check, setting and maintenance function



Simplified tailstock Setting



SMEC Co., Ltd.

157-10, Goldenroot-ro, Juchon-myeon, Gimhae-si,
Gyeongsangnam-do, Republic of Korea
Tel +82 55 340 4800 / Fax +82 55 340 4740
www.smecmachinetools.com

SMEC Europe GmbH.

Hammer Landstr. 113, 41460 Neuss,
Germany
Tel. +49 2131 531 4012
www.smec-europe.com

SMEC America Corp.

14 W Forest Ave, Englewood, NJ
07631, U. S. A
Tel. +1 201 227 7632
www.esmecamerica.com